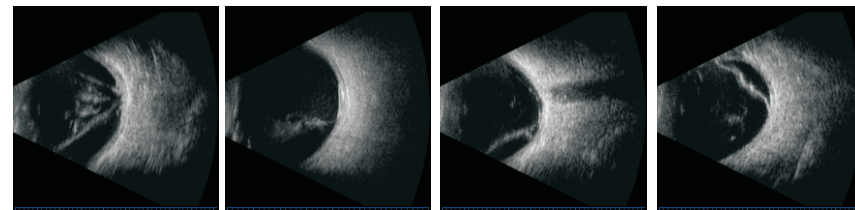
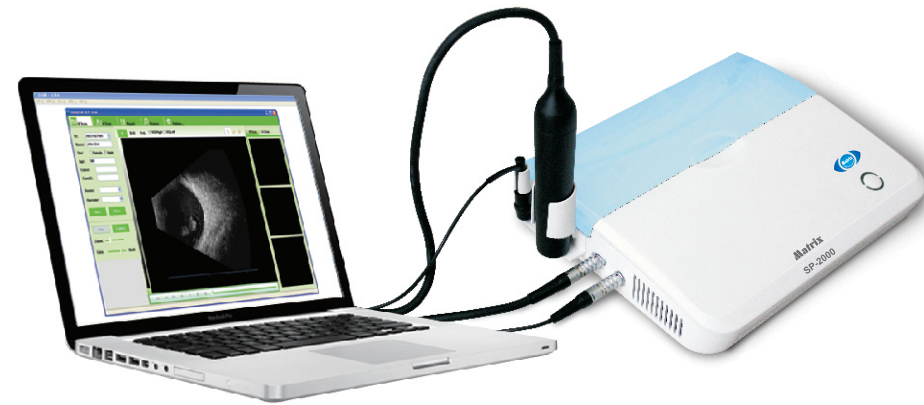




## SonopTek Ophthalmic Ultra sound A/B Scanner SP:2000

The next generation ophthalmic A/B scan with Innovative design, outstanding performance & user friendly operation.

- \* Truly portable, light weight & compact body.
- \* USB connection to Laptop & Desktop.
- \* Integrated image capture, patient management & report editing.
- \* Extra high resolution image with user- friendly image Processing software.
- \* 12.5MHz noise-less transducer probe.
- \* B,B+B,B+A & A scan features.
- \* Upgradable to UBM (optional Modular unit)
- \* 100 frame capturable cine-loop function.
- \* multi-stage function with segmental gain adjustment to View details of particular area.
- \* Marking of distance, Area & perimeter of any particular anomalies in the captured image.
- \* Integrated A scan with, Contact & Immersion biometry, 6 latest formulas, Adjustable segment U/S velocities.
- \* Fast reading with digital accuracy, Average standard deviation & auto capture with Auto progress.
- \* Vast memory base depending upon the computer used for data storage & browsing.
- \* Can be use with desktop computer as a fixed table top version or through laptop as a portable version
- \* **Manufactured By SonopTek Inc., PRC**



### TECHNICAL SPECIFICATION

#### U/S IMAGING : B- SCAN

\*Upgradable to UBM at additional cost.

<b>U/S Probe:</b> 12.50 MHz magnetic driven noiseless probe.
<b>Scanning Mode:</b> 53° Sector scanning
<b>Clinical Resolution:</b> 0.1mm
<b>Precision:</b> lateral ≤ 10%, vertical ≤ 5%
<b>Gain:</b> 20dB to 105dB with variable gain control.
<b>Depth of Scanning:</b> 0mm ~ 50mm
<b>Zoom:</b> Multi level zooming of an image or its section.
<b>Measure mode:</b> Distance Perimeter & area within captured image.
<b>Case Report:</b> PDF format case report archiving
<b>Cine Loop:</b> captures 100 frames of movie loop (7sec)
<b>Display Mode:</b> A, A+B, B+B (For comparison), & B mode.
<b>Date Out Put:</b> High resolution Display & hard copy Print-out through external desk jet Printer.
<b>Grey Scale:</b> 256 shades / <b>False color mode:</b> 7 colors
<b>Power supply/ Consumption:</b> 220VAC (50-60Hz) / Approx 60VA

#### (BIOMETRY) / A-SCAN

<b>U/S probe:</b> 10MHz solid & light probe with Fixation light.
<b>Measurement Range:</b> Short to Extra large eye (14 mm~48mm)
<b>Precision:</b> ± 0.05mm
<b>Measurement Mode:</b> Auto/ Manual ( using foot switch)
<b>Measuring Method:</b> contact & Immersion method
<b>Eye Type:</b> Phakic normal, Normal cataract, DENS Cataract, Aphakic, Pseudo Phakic & CUSTOM DEFINED.
<b>Store( Scans/Eye) :</b> 10Scanning result for each eye.
<b>Calculation Formulas:</b> SRK-II, SRK-T, BINKHORST-II, HOLLADAYS, HOFFER-Q, HAIGIS & Post LASIK IOL Calculation.
<b>Date Out Put:</b> High resolution Display & hard copy Print-out through external desk jet Printer.
<b>Memory:</b> Innumerable (As per computer memory)
<b>Power supply/ Consumption:</b> 220VAC (50-60Hz) / Approx 60VA

Standard Accessories: Console workstation, A scan Probe, B-Scan Probe, Power cable, USB connecting cable, Operating manual.  
Optional: Locally procure Laptop/Desk Top computer, USB, Printer, table ( If any)



Manufactured by :  
SonopTek Co. Ltd.  
Rm. 1504, Bldg-1, Huihuangguoji Plaza, 10th Shangdi Str, Haidian Dist.,  
Beijing-100085, Telefax : 86-10-59713135, Web : www.sonoptek.com

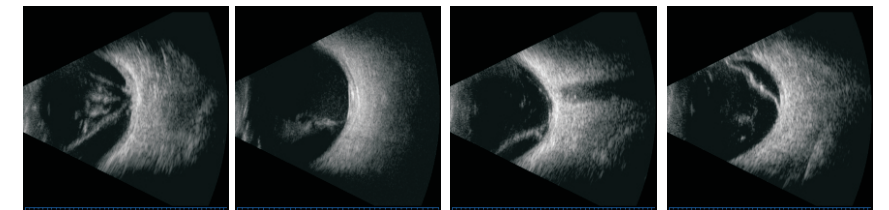
Specification & design are subject to change without prior notice for improvement.



## SonopTek Ophthalmic Ultra sound A/B Scanner SP:2000

The next generation ophthalmic A/B scan with Innovative design, outstanding performance & user friendly operation.

- \* Truly portable, light weight & compact body.
- \* USB connection to Laptop & Desktop.
- \* Integrated image capture, patient management & report editing.
- \* Extra high resolution image with user- friendly image Processing software.
- \* 12.5MHz noise-less transducer probe.
- \* B,B+B,B+A & A scan features.
- \* Upgradable to UBM (optional Modular unit)
- \* 100 frame capturable cine-loop function.
- \* multi-stage function with segmental gain adjustment to View details of particular area.
- \* Marking of distance, Area & perimeter of any particular anomalies in the captured image.
- \* Integrated A scan with, Contact & Immersion biometry, 6 latest formulas, Adjustable segment U/S velocities.
- \* Fast reading with digital accuracy, Average standard deviation & auto capture with Auto progress.
- \* Vast memory base depending upon the computer used for data storage & browsing.
- \* Can be use with desktop computer as a fixed table top version or through laptop as a portable version
- \* **Manufactured By SonopTek Inc., PRC**



### TECHNICAL SPECIFICATION

#### U/S IMAGING : B- SCAN

\*Upgradable to UBM at additional cost.

<b>U/S Probe:</b> 12.50 MHz magnetic driven noiseless probe.
<b>Scanning Mode:</b> 53° Sector scanning
<b>Clinical Resolution:</b> 0.1mm
<b>Precision:</b> lateral ≤ 10%, vertical ≤ 5%
<b>Gain:</b> 20dB to 105dB with variable gain control.
<b>Depth of Scanning:</b> 0mm ~ 50mm
<b>Zoom:</b> Multi level zooming of an image or its section.
<b>Measure mode:</b> Distance Perimeter & area within captured image.
<b>Case Report:</b> PDF format case report archiving
<b>Cine Loop:</b> captures 100 frames of movie loop (7sec)
<b>Display Mode:</b> A, A+B, B+B (For comparison), & B mode.
<b>Date Out Put:</b> High resolution Display & hard copy Print-out through external desk jet Printer.
<b>Grey Scale:</b> 256 shades / <b>False color mode:</b> 7 colors
<b>Power supply/ Consumption:</b> 220VAC (50-60Hz) / Approx 60VA

#### (BIOMETRY) / A-SCAN

<b>U/S probe:</b> 10MHz solid & light probe with Fixation light.
<b>Measurement Range:</b> Short to Extra large eye (14 mm~48mm)
<b>Precision:</b> ± 0.05mm
<b>Measurement Mode:</b> Auto/ Manual ( using foot switch)
<b>Measuring Method:</b> contact & Immersion method
<b>Eye Type:</b> Phakic normal, Normal cataract, DENS Cataract, Aphakic, Pseudo Phakic & CUSTOM DEFINED.
<b>Store( Scans/Eye) :</b> 10Scanning result for each eye.
<b>Calculation Formulas:</b> SRK-II, SRK-T, BINKHORST-II, HOLLADAYS, HOFFER-Q, HAIGIS & Post LASIK IOL Calculation.
<b>Date Out Put:</b> High resolution Display & hard copy Print-out through external desk jet Printer.
<b>Memory:</b> Innumerable (As per computer memory)
<b>Power supply/ Consumption:</b> 220VAC (50-60Hz) / Approx 60VA

Standard Accessories: Console workstation, A scan Probe, B-Scan Probe, Power cable, USB connecting cable, Operating manual.  
Optional: Locally procure Laptop/Desk Top computer, USB, Printer, table ( If any)



Manufactured by :  
SonopTek Co. Ltd.  
Rm. 1504, Bldg-1, Huihuangguoji Plaza, 10th Shangdi Str, Haidian Dist.,  
Beijing-100085, Telefax : 86-10-59713135, Web : www.sonoptek.com

Specification & design are subject to change without prior notice for improvement.