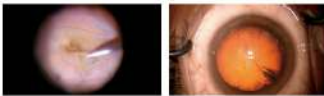


## Optics and Light Source

### New Optics

- New red-reflex illumination system providing extremely bright reflected light from the fundus, allowing Surgeon to perform ocular surgery with ease.
- By adopting a standard objective lens of F=200 mm, the working distance is optimized for a conventional surgery.
- The magnification eyepieces bring a wide, bright, and sharper view with a larger depth of focus.



### Two Independent LED Light Sources

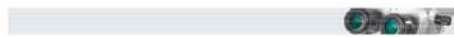
- Light intensity for red-reflex illumination and coaxial illumination can be adjusted separately due to their fully independent light sources.

### High-luminance LED

- Bright and easy high-luminance LED having excellent color balance, giving a much brighter reflected light from the fundus in combination with their new reflex illumination optical system.

### Blue Light Reduction

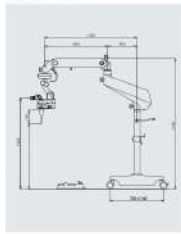
- With the blue correction filter, the projected light is well cut away on the patient's eye\* to reduce the peak of the chromatic line wavelength of LED.



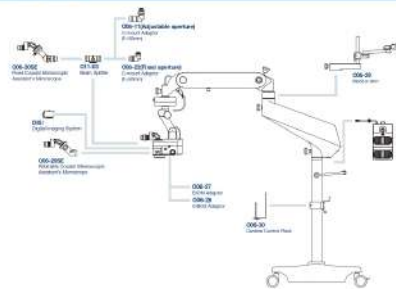
### Specifications

Independent design	Multi-Optic (Multi-type) (OM-19)
Objective	F=200mm
Eye-piece	19° High-magnification & wide field
Zoom lens	70mm (variable) (Zoom F1.1/20mm)
Zoom magnification	3.44 to 20.0x
Resolution of lens	300 lines/mm (C/N ratio)
Focusing stroke	20mm (with centering function)
In-Focus sensor (with centering function)	Yes
Light source	LED
Color of illumination	Standard
Beam size	220mmφ
Beam size (LED)	220mmφ
Beam size (LED)	220mmφ
Filter	Heat absorbing, Blue Correction, Yellow, Polarizing Glass
Weight	16.0kg
Maximum size	1450mm
Minimum size	1000mm
Base size	750mm x 750mm
Height	1400mm
Power consumption	1100W
Power supply	AC 100-240V 50/60Hz

### Dimensions



### System Chart



\*Design and specifications are subject to change as improvements are made to the product.

**TAKAGI SEIKO CO.,LTD.**

393-2 SHIMIZU, KAWASAKI-SHI, SAIHAIKU-KU, 2485-8565, JAPAN  
TEL: +81-263-82-4510 FAX: +81-263-82-4502  
URL: <http://www.takagi.com> E-mail: [info@takagi.com](mailto:info@takagi.com)



©2016 Takagi Seiko Co., Ltd.

**TAKAGI**

Operating Microscope

OM-19



Serving your vision





Operating Microscope

# OM-19

Operating microscope with a feeling of being "visible"



The world's first operating microscope with independent light intensity adjustment for coaxial and red-reflex illumination to suit each patient case and Surgeons unique preference.  
High-performance LED operating microscope combining "visualizing" with "ease of use".

## Ergonomics Tailored for You

### Tiltable Binocular Tubes

- Tiltable binocular tubes with an angle of view than 90° to suit the height and posture of the operating surgeon.
- Viewable range: 0° (horizontal) to 90° (vertical).
- High-grade high-magnification multi-coated eyepieces delivering a bright and sharp view.

### Easy-to-use Operation Panel

- Light intensity for coaxial and red-reflex illumination can be adjusted separately.
- Z-focus, zoom, and X-Y zoom are independently adjustable.
- Automatic X-Y and focus centering can be performed at the touch of a button.

### Foot Controller

- 10-way operation including auto-focus, illumination control, coaxial illumination switch, X-Y movement, focusing up/down, and zoom in/out are all included.
- Foot switch configuration of the footswitch up/down and zoom in/out can be changed according to the Surgeon's individual requirements and application.
- Waterproof foot controller.

### Safety Stop Mechanism

- Safety stop mechanism equipped as standard, where the lowered arm position can be set according to the height of the operating table, or local bump up circumstances.



### Microscope Head Tilting Mechanism

- By adopting a fine-movement tilt-back system, the microscope head tilts back and forth easily, necessary in the application of glaucoma surgery, with a movable range of around 30° each-way.



## Various Options

### Rotating Coaxial Stereoscopic Assistant's Microscope

- Stereoscopic view available also through the assistant's microscope.
- 180° continuous rotation through right and left directions whilst mounted.
- Magnification adjusted manually in three steps.
- Tiltable binocular tubes equipped as standard, which can include more than 90°.
- See other image through the assistant's microscope is different from the main surgeon's view, the red-reflex illumination is applicable to the main surgeon's optics.

System	3D
Objective	1x, 2x, 3x
Total magnification	3.3x, 6.6x, 9.9x
Field of view	100mm, 200mm, 320mm

### Fixed Coaxial Monoscopic Assistant's Microscope

- Providing the same scale as the main microscope on the side display.
- Mounted using the OM-19 Beam splitter, with the optical axis switching time. Ideal when 100% light is required by the main surgeon.

### C-mount Adapter

- CCD camera system can be mounted using OM-19 Beam splitter and OM-22 or OM-23 C-mount camera adapter for integration with surgical video documentation systems.
- OM-11 is equipped with an adjustable aperture for regulating light, OM-22 comes with a fixed aperture.

### Monitor Arm & Camera Control Rack

- LCD monitor can be mounted on the upper microscope arm with OM-29 Monitor arm.
- Camera control unit can be mounted on the lower microscope pole with OM-30 Camera control rack.

### Fundus Observation Devices Adaptations

- Optus GRIM and Haag Streit S3025 adaptations are available.
- For complete details, please contact your local distributor or our Sales Department.

